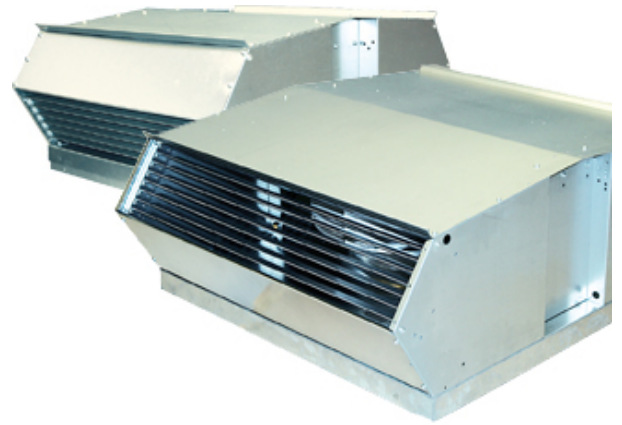


TKV/TKH 960 C1

Description

Our new, unique and patent pending roof fans you can easily modify for either horizontal or vertical outlet. Equally easy to clean and maintain. They achieve a higher airflow compared to the previous models but with even lower sound levels.



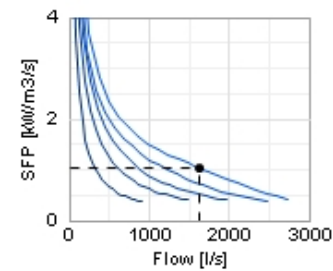
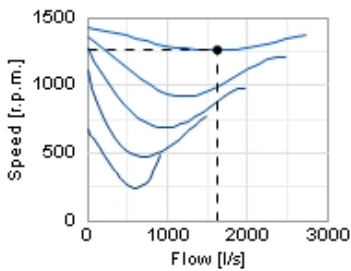
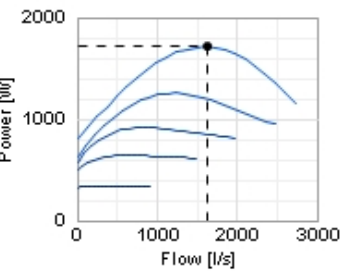
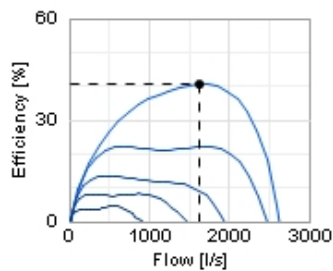
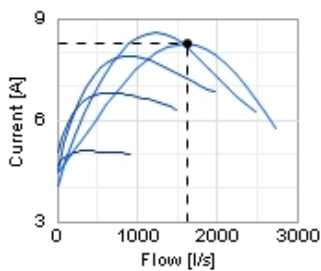
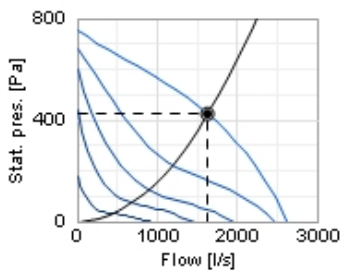
Technical data

Parameter	value	Unit
Voltage	230	V
Phase	1	~
Frequency	50	Hz
Power	1690	W
Current	8,2	A
R.p.m.	1260	r.p.m.
Max. temperature of transported air	50	°C
Max. temperature of transported air when speed-controlled	50	°C
Sound pressure level at 10 m	63	dB(A)
Weight	78	kg
Enclosure class, motor	44	IP
Insulation class, motor	F	
Capacitor	25	µF

Diagrams

○ Selected point

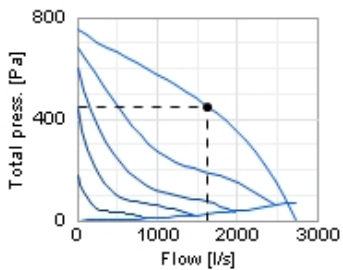
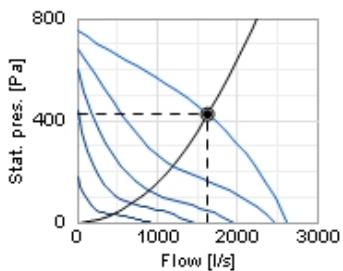
Flow [l/s]	1634
Stat. pres. [Pa]	424
● Work point	
Flow [l/s]	1635
Stat. pres. [Pa]	424
Power [W]	1711
Current [A]	8,25
Speed [r.p.m.]	1257
Efficiency [%]	40,5
SFP [kW/m ³ /s]	1,03
Voltage [V]	230



Sound

○ Selected point

Flow [l/s]	1634
Stat. pres. [Pa]	424
● Work point	
Flow [l/s]	1635
Stat. pres. [Pa]	424
Total press. [Pa]	450
Power [W]	1711
Current [A]	8,25
Speed [r.p.m.]	1257
Efficiency [%]	40,5
SFP [kW/m ³ /s]	1,03
Voltage [V]	230

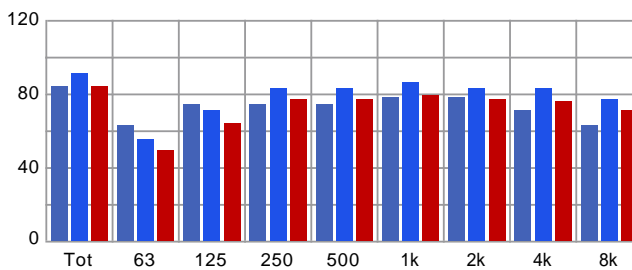


Distance: 3

Propagation type: Semi-spherical

Equivalent absorption area: 20

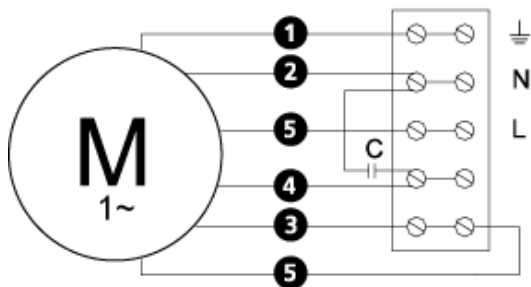
	Tot	63	125	250	500	1k	2k	4k	8k
Inlet Lw dB(A)	84	63	74	74	74	78	78	71	63
Surrounding Lw dB(A)	91	55	71	83	83	86	83	83	77
Surrounding Lp dB(A)	84	49	64	77	77	79	77	76	71



Dimensions

Wiring diagram

4040005



- Ⓜ = Fan Motor
- Ⓜ1 = Fan Motor
- Ⓜ2 = Fan Motor
- Ⓜ3 = Rotor Motor
- ① = Yellow/Green
- ② = Black
- ③ = Blue
- ④ = Brown
- ⑤ = White (TW)
- ⑥ = Orange
- ⑦ = Grey
- ⑧ = Red
- ⑨ = Green
- ⑩ = Violet

Accessories

Accessories



TFU 960