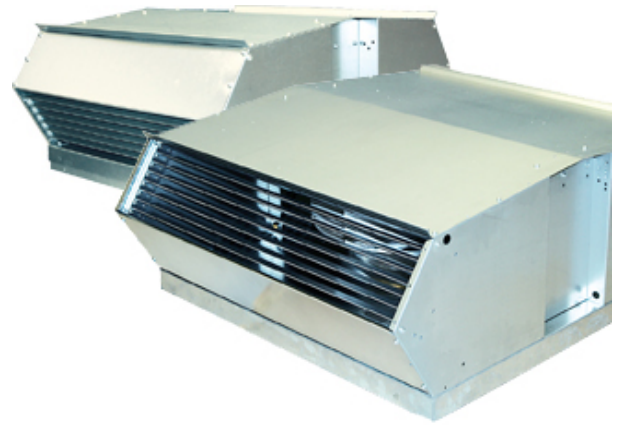


## TKV/TKH 960 A3

### Description

Our new, unique and patent pending roof fans you can easily modify for either horizontal or vertical outlet. Equally easy to clean and maintain. They achieve a higher airflow compared to the previous models but with even lower sound levels.



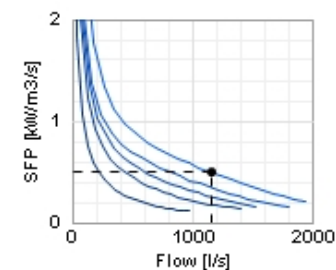
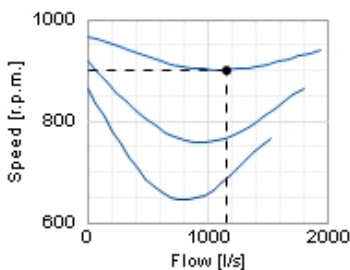
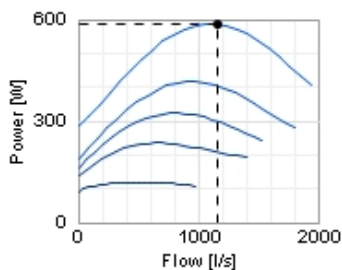
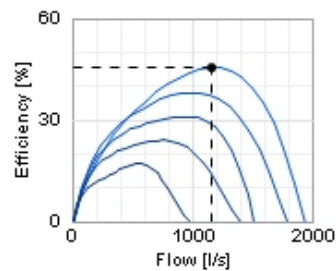
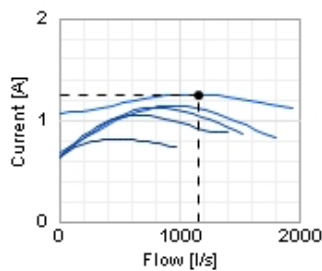
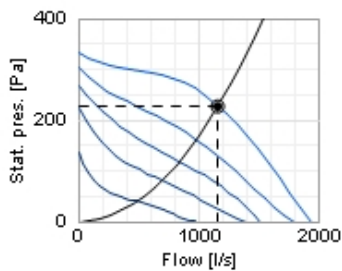
### Technical data

Parameter	value	Unit
Voltage	400	V
Phase	3	~
Frequency	50	Hz
Power	590	W
Current	1,3	A
R.p.m.	900	r.p.m.
Max. temperature of transported air	55	°C
Max. temperature of transported air when speed-controlled	55	°C
Sound pressure level at 10 m	52	dB(A)
Weight	69	kg
Enclosure class, motor	44	IP
Insulation class, motor	F	
Capacitor	-	µF

## Diagrams

○ Selected point

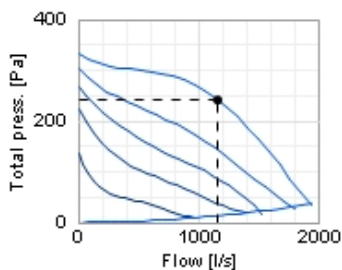
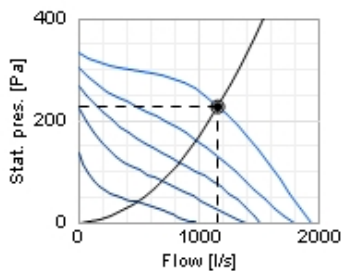
Flow [l/s]	1168
Stat. pres. [Pa]	229
● Work point	
Flow [l/s]	1168
Stat. pres. [Pa]	229
Power [W]	587
Current [A]	1,25
Speed [r.p.m.]	901
Efficiency [%]	45,5
SFP [kW/m <sup>3</sup> /s]	0,494
Voltage [V]	400



## Sound

○ Selected point

Flow [l/s]	1168
Stat. pres. [Pa]	229
● Work point	
Flow [l/s]	1168
Stat. pres. [Pa]	229
Total press. [Pa]	242
Power [W]	587
Current [A]	1,25
Speed [r.p.m.]	901
Efficiency [%]	45,5
SFP [kW/m <sup>3</sup> /s]	0,494
Voltage [V]	400

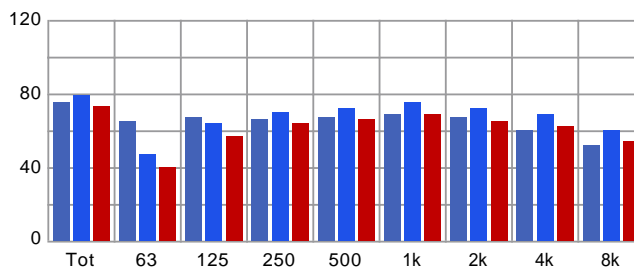


Distance: 3

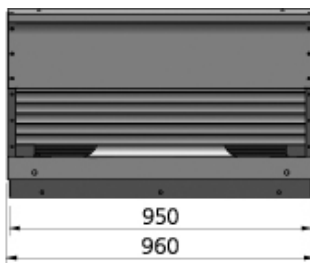
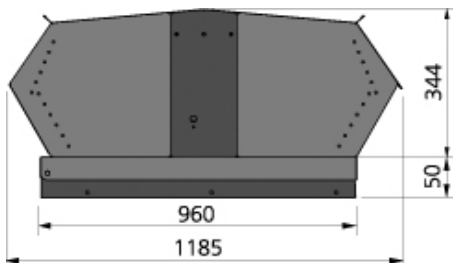
Propagation type: Semi-spherical

Equivalent absorption area: 20

	Tot	63	125	250	500	1k	2k	4k	8k
Inlet Lw dB(A)	75	65	67	66	67	69	67	60	52
Surrounding Lw dB(A)	79	47	64	70	72	75	72	69	60
Surrounding Lp dB(A)	73	40	57	64	66	69	65	62	54

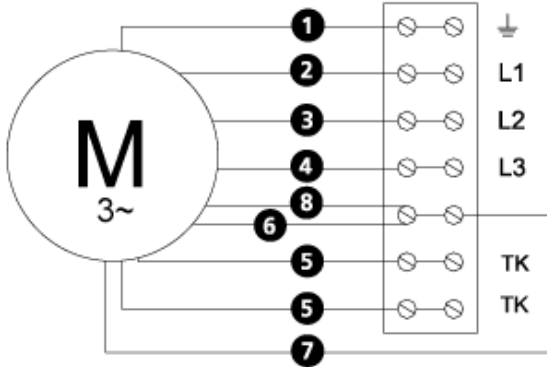


## Dimensions



Wiring diagram

4040004



- (M) = Fan Motor
- (M1) = Fan Motor
- (M2) = Fan Motor
- (M3) = Rotor Motor
- 1 = Yellow/Green
- 2 = Black
- 3 = Blue
- 4 = Brown
- 5 = White (TW)
- 6 = Orange
- 7 = Grey
- 8 = Red
- 9 = Green
- 10 = Violet

Accessories

Accessories



TFU 960