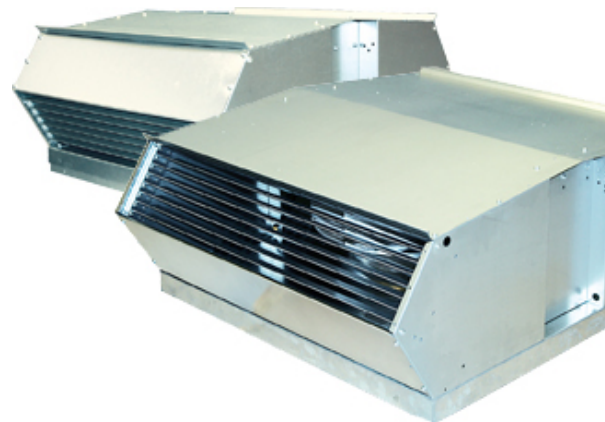


## TKV/TKH 960 A1

### Description

Our new, unique and patent pending roof fans you can easily modify for either horizontal or vertical outlet. Equally easy to clean and maintain. They achieve a higher airflow compared to the previous models but with even lower sound levels.



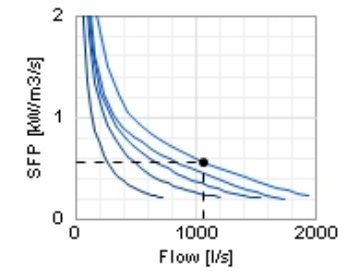
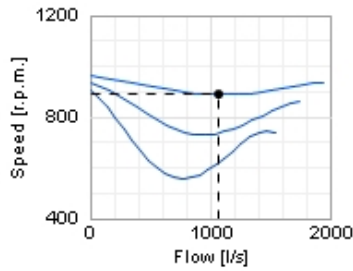
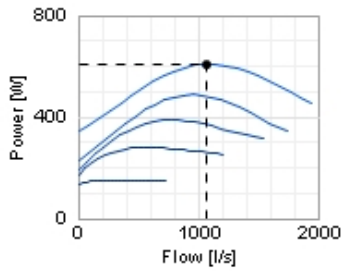
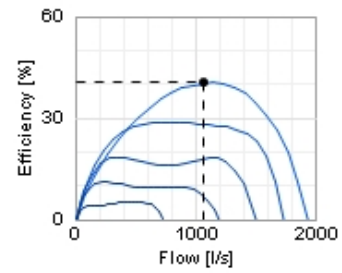
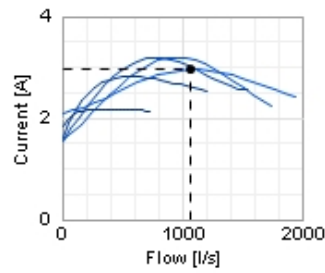
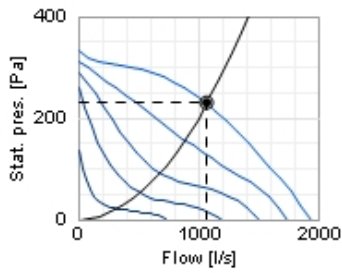
### Technical data

Parameter	value	Unit
Voltage	230	V
Phase	1	~
Frequency	50	Hz
Power	620	W
Current	3	A
R.p.m.	890	r.p.m.
Max. temperature of transported air	45	°C
Max. temperature of transported air when speed-controlled	45	°C
Sound pressure level at 10 m	50	dB(A)
Weight	70	kg
Enclosure class, motor	44	IP
Insulation class, motor	F	
Capacitor	12	µF

## Diagrams

○ Selected point

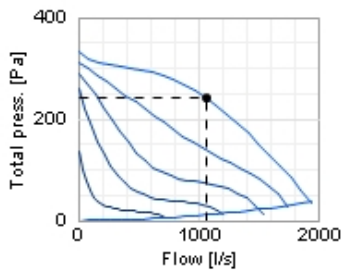
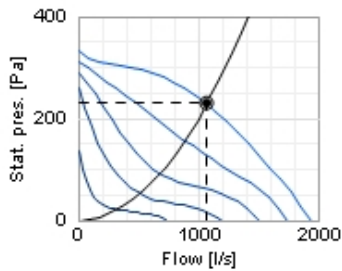
Flow [l/s]	1073
Stat. pres. [Pa]	229
● Work point	
Flow [l/s]	1072
Stat. pres. [Pa]	229
Power [W]	609
Current [A]	2,96
Speed [r.p.m.]	889
Efficiency [%]	40,4
SFP [kW/m <sup>3</sup> /s]	0,558
Voltage [V]	230



## Sound

○ Selected point

Flow [l/s]	1073
Stat. pres. [Pa]	229
● Work point	
Flow [l/s]	1072
Stat. pres. [Pa]	229
Total press. [Pa]	240
Power [W]	609
Current [A]	2,96
Speed [r.p.m.]	889
Efficiency [%]	40,4
SFP [kW/m <sup>3</sup> /s]	0,558
Voltage [V]	230

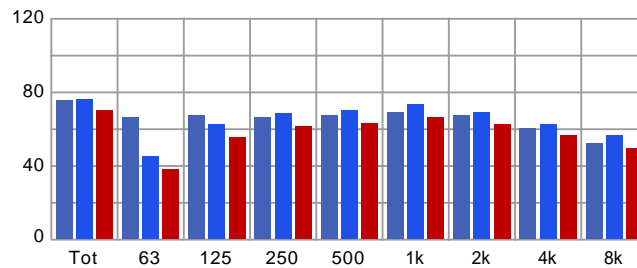


Distance: 3

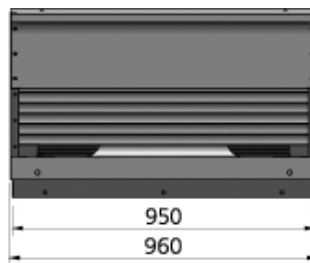
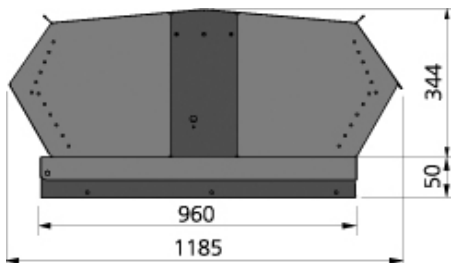
Propagation type: Semi-spherical

Equivalent absorption area: 20

	Tot	63	125	250	500	1k	2k	4k	8k
Inlet Lw dB(A)	75	66	67	66	67	69	67	60	52
Surrounding Lw dB(A)	76	45	62	68	70	73	69	62	56
Surrounding Lp dB(A)	70	38	55	61	63	66	62	56	49

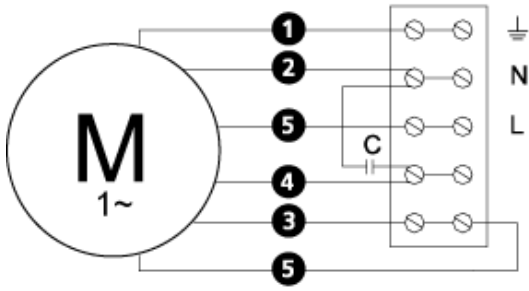


## Dimensions



Wiring diagram

4040005



- Ⓜ = Fan Motor
- Ⓜ1 = Fan Motor
- Ⓜ2 = Fan Motor
- Ⓜ3 = Rotor Motor
- 1 = Yellow/Green
- 2 = Black
- 3 = Blue
- 4 = Brown
- 5 = White (TW)
- 6 = Orange
- 7 = Grey
- 8 = Red
- 9 = Green
- 10 = Violet

Accessories

Accessories



TFU 960