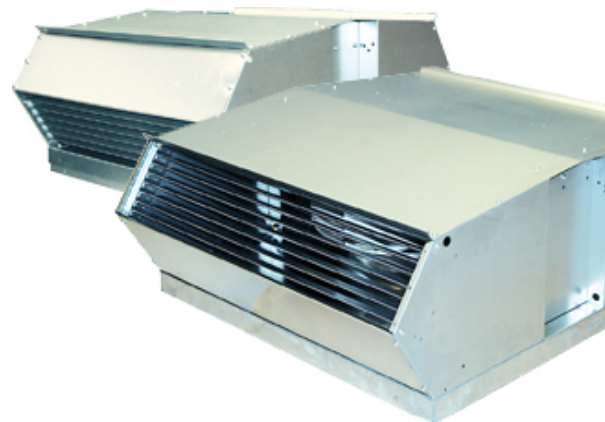


TKV/TKH 760 B1

Description

Our new, unique and patent pending roof fans you can easily modify for either horizontal or vertical outlet. Equally easy to clean and maintain. They achieve a higher airflow compared to the previous models but with even lower sound levels.



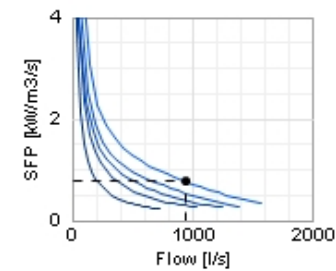
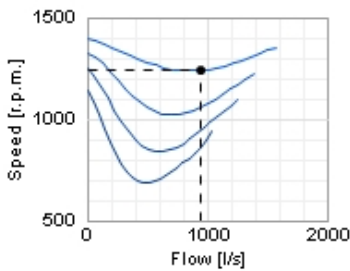
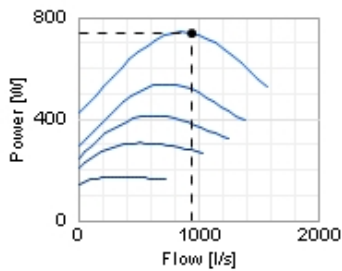
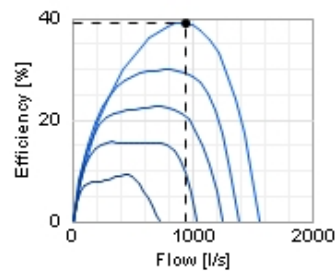
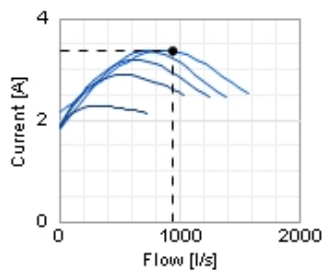
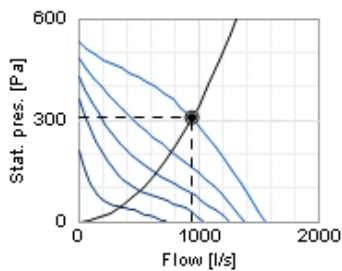
Technical data

| Parameter | value | Unit |
|---|-------|--------|
| Voltage | 230 | V |
| Phase | 1 | ~ |
| Frequency | 50 | Hz |
| Power | 740 | W |
| Current | 3,4 | A |
| R.p.m. | 1240 | r.p.m. |
| Max. temperature of transported air | 50 | °C |
| Max. temperature of transported air when speed-controlled | 50 | °C |
| Sound pressure level at 10 m | 51 | dB(A) |
| Weight | 51 | kg |
| Enclosure class, motor | 44 | IP |
| Insulation class, motor | F | |
| Capacitor | 16 | µF |

Diagrams

○ Selected point

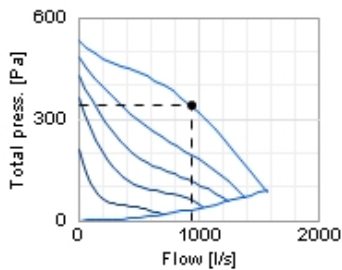
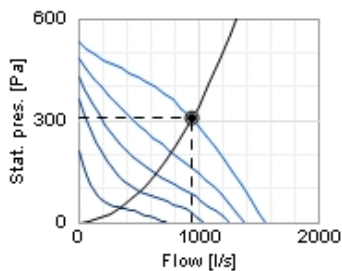
| | |
|----------------------------|-------|
| Flow [l/s] | 944 |
| Stat. pres. [Pa] | 306 |
| ● Work point | |
| Flow [l/s] | 945 |
| Stat. pres. [Pa] | 306 |
| Power [W] | 739 |
| Current [A] | 3,36 |
| Speed [r.p.m.] | 1241 |
| Efficiency [%] | 39,1 |
| SFP [kW/m ³ /s] | 0,769 |
| Voltage [V] | 230 |



Sound

○ Selected point

| | |
|----------------------------|-------|
| Flow [l/s] | 944 |
| Stat. pres. [Pa] | 306 |
| ● Work point | |
| Flow [l/s] | 945 |
| Stat. pres. [Pa] | 306 |
| Total press. [Pa] | 339 |
| Power [W] | 739 |
| Current [A] | 3,36 |
| Speed [r.p.m.] | 1241 |
| Efficiency [%] | 39,1 |
| SFP [kW/m ³ /s] | 0,769 |
| Voltage [V] | 230 |

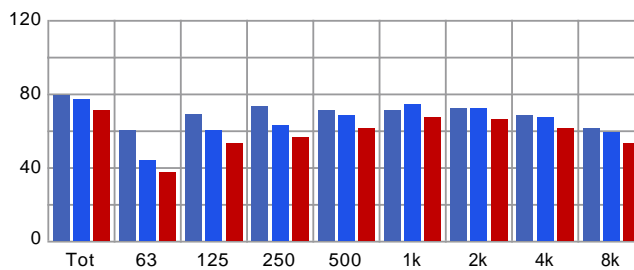


Distance: 3

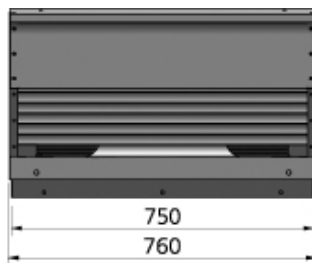
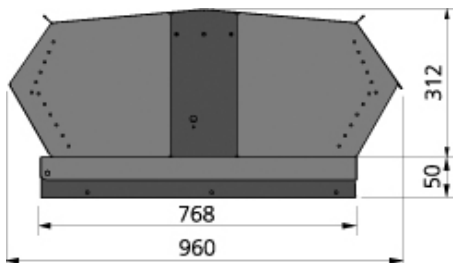
Propagation type: Semi-spherical

Equivalent absorption area: 20

| | Tot | 63 | 125 | 250 | 500 | 1k | 2k | 4k | 8k |
|----------------------|-----|----|-----|-----|-----|----|----|----|----|
| Inlet Lw dB(A) | 79 | 60 | 69 | 73 | 71 | 71 | 72 | 68 | 61 |
| Surrounding Lw dB(A) | 77 | 44 | 60 | 63 | 68 | 74 | 72 | 67 | 59 |
| Surrounding Lp dB(A) | 71 | 37 | 53 | 56 | 61 | 67 | 66 | 61 | 53 |

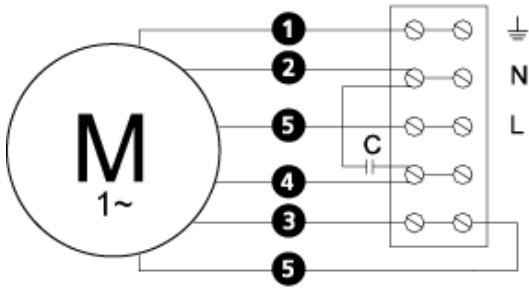


Dimensions



Wiring diagram

4040005



(M) = Fan Motor

(M1) = Fan Motor

(M2) = Fan Motor

(M3) = Rotor Motor

1 = Yellow/Green

2 = Black

3 = Blue

4 = Brown

5 = White (TW)

6 = Orange

7 = Grey

8 = Red

9 = Green

10 = Violet

Accessories

Accessories



TFU 760