

## Description

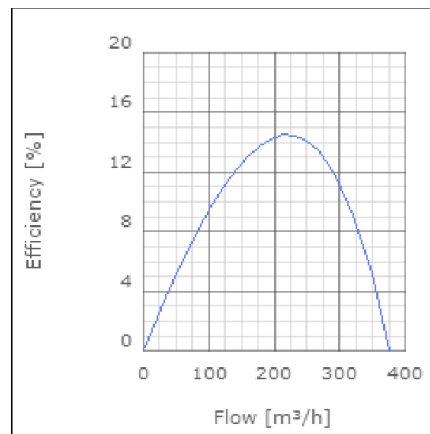
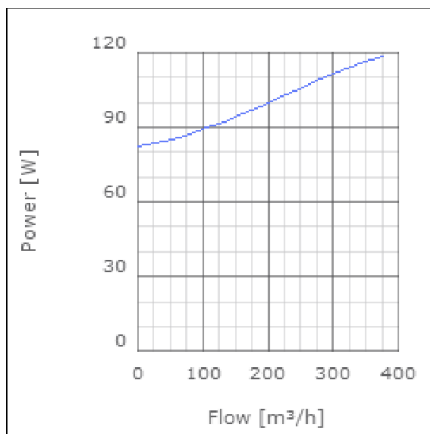
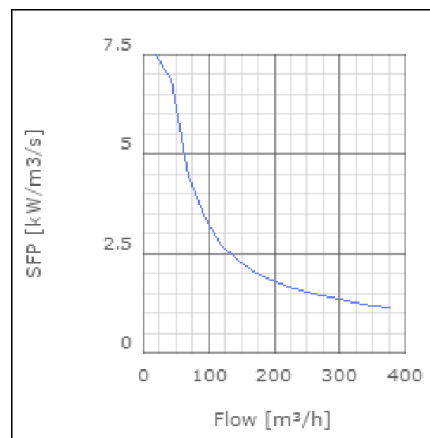
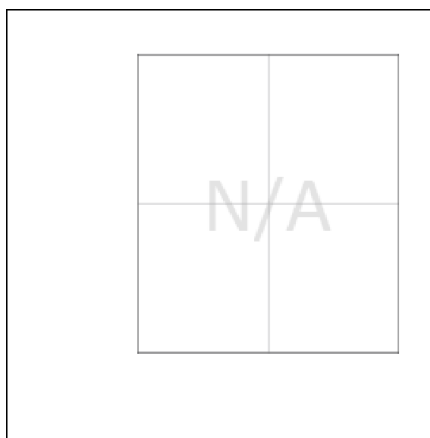
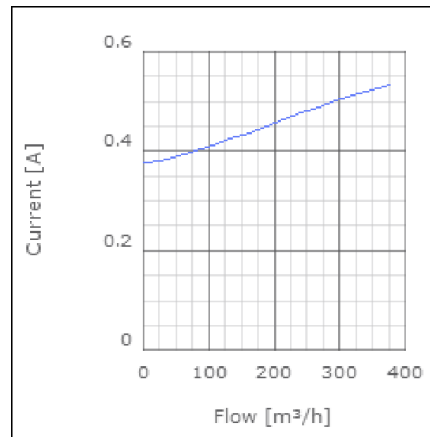
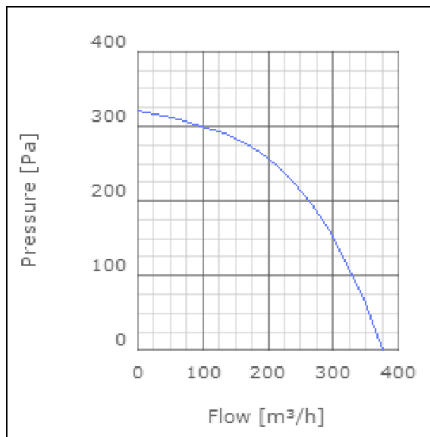
SAU supply air units are designed to give a pleasant indoor environment. They provide both heat and clean air. The units are supplied complete with filter, fan and heater. SAU125 and 200 can be operated using a dual controller; Heater on/off and fan speed 0/1/2. It is also possible to regulate externally using a pulser. SAU 250 with a water battery is operated using a 3-way valve and control equipment. The range is manufactured using galvanized sheet metal. The units are insulated with 50mm of mineral wool allowing for use in both warm and cold areas. Alternative filters are available; G4, F4 and F7 (G4 as standard).



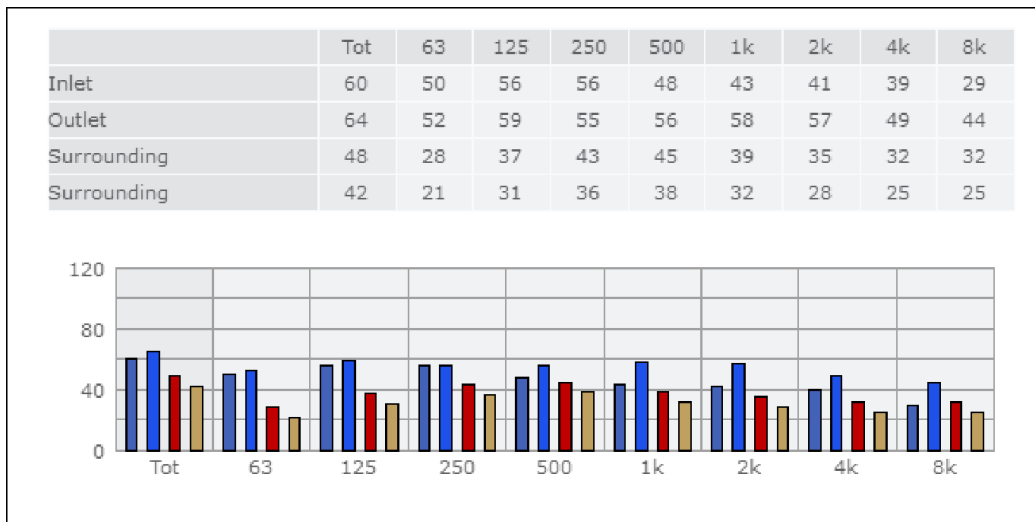
## Technical data

Parameter	Value	Unit
Voltage	230	V
Phase	1	~
Frequency	50	Hz
Input power, fan	110	W
Input power, heater	2000	W
Input power, total	2110	W
Current	9.2	A
Sound pressure level at 3 m	41	dB(A)
Length	833	mm
Width	319	mm
Height	255	mm
Weight	20	kg
Enclosure class, motor	44	IP
Insulation class, motor	F	
Duct connection	ø125 mm	

Diagrams



Sound



**Parameter**

Distance: 3.000  
 Propagation type: Hemi-spherical  
 Equivalent absorption area: 20.00

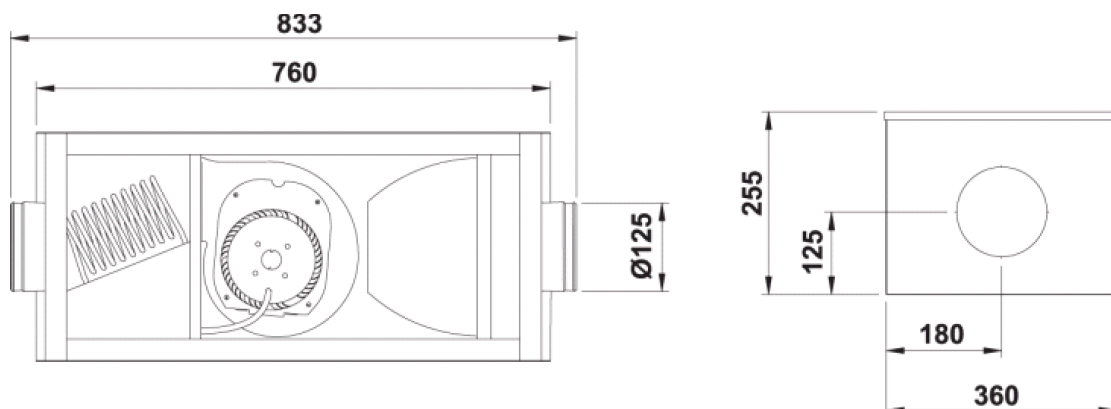
**Checked point**

Flow 221.583m<sup>3</sup>/h  
 Static pressure 238Pa

**Working point**

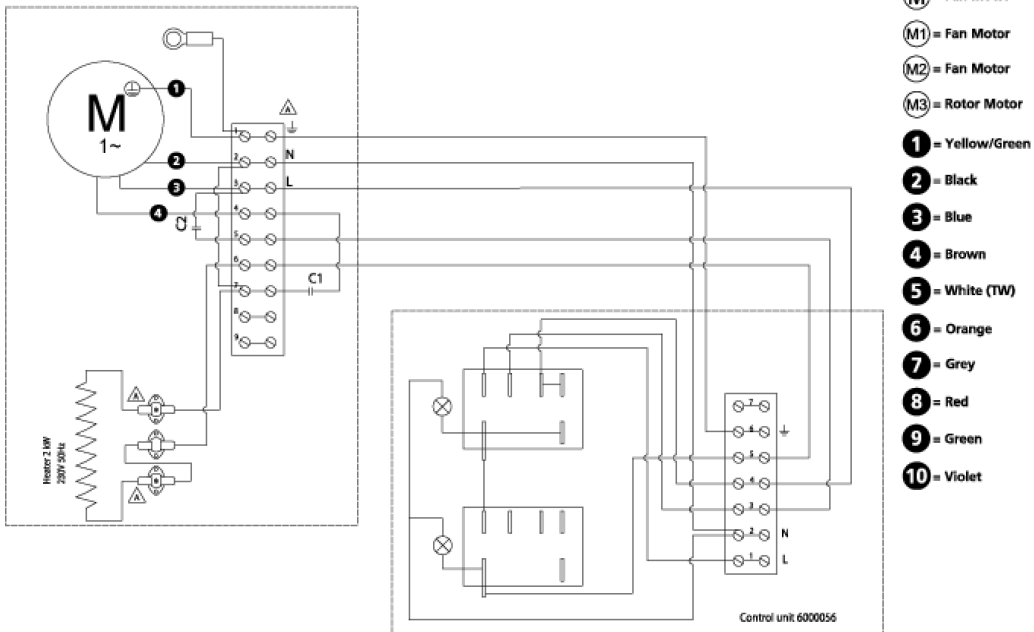
Flow 222.585m<sup>3</sup>/h  
 Static Pressure 241Pa  
 Power 102W  
 Speed 0r/s  
 Current 0.47A  
 Voltage 230V  
 Efficiency 14.524%  
 SFP 1.66kW/m<sup>3</sup>/s

Dimensions



## Wiring diagram

4040040A



## Accessories

### Electrical accessories

SAU 125 Filter

LDC 125