

KVFU 315 C

Description

KV is a range of wall mounted fans. The fans are available in six sizes giving twelve different capacities. This variety combined with ease of positioning allow for a wide variety of applications including use in damp and humid environments. The fans housing and square backing plate are made of galvanised steel. They are entirely maintenance free.

The range is fitted with ball bearing mounted external rotor type motors with radial backward curved impellers.

The fans speed can be controlled by voltage variation.



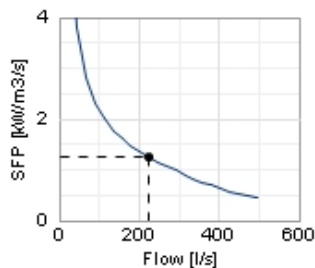
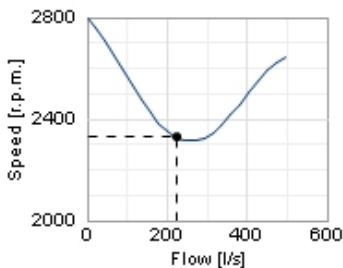
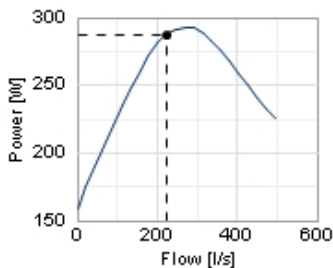
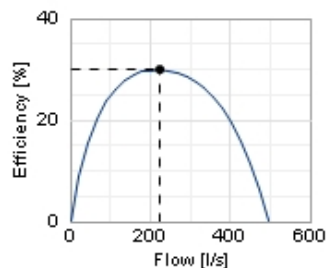
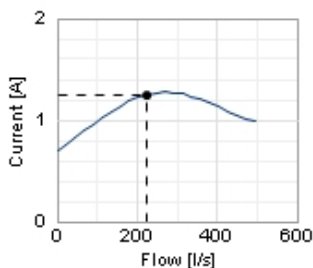
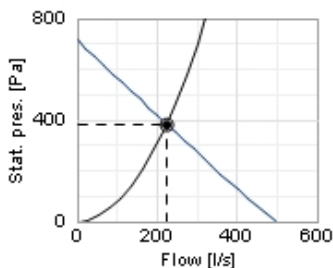
Technical data

Parameter	value	Unit
Voltage	230	V
Phase	1	~
Frequency	50	Hz
Power	274	W
Current	1,19	A
R.p.m.	2500	r.p.m.
Max. temperature of transported air	50	°C
Max. temperature of transported air when speed-controlled	50	°C
Sound pressure level at 3 m	51	dB(A)
Length	158	mm
Width	460	mm
Height	460	mm
Weight	5,8	kg
Enclosure class, motor	44	IP
Insulation class, motor	F	
Capacitor	8	µF
Duct connection	ø315 mm	

Diagrams

○ Selected point

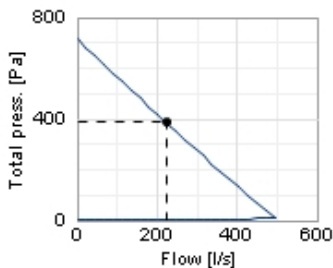
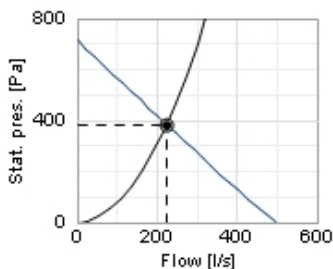
Flow [l/s]	222
Stat. pres. [Pa]	385
● Work point	
Flow [l/s]	223
Stat. pres. [Pa]	385
Power [W]	287
Current [A]	1,25
Speed [r.p.m.]	2328
Efficiency [%]	29,8
SFP [kW/m ³ /s]	1,26
Voltage [V]	230



Sound

○ Selected point

Flow [l/s]	222
Stat. pres. [Pa]	385
● Work point	
Flow [l/s]	223
Stat. pres. [Pa]	385
Total press. [Pa]	387
Power [W]	287
Current [A]	1,25
Speed [r.p.m.]	2328
Efficiency [%]	29,8
SFP [kW/m ³ /s]	1,26
Voltage [V]	230

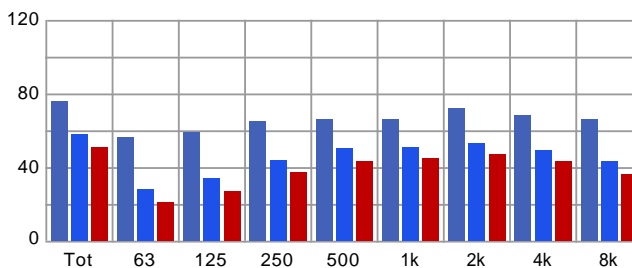


Distance: 3

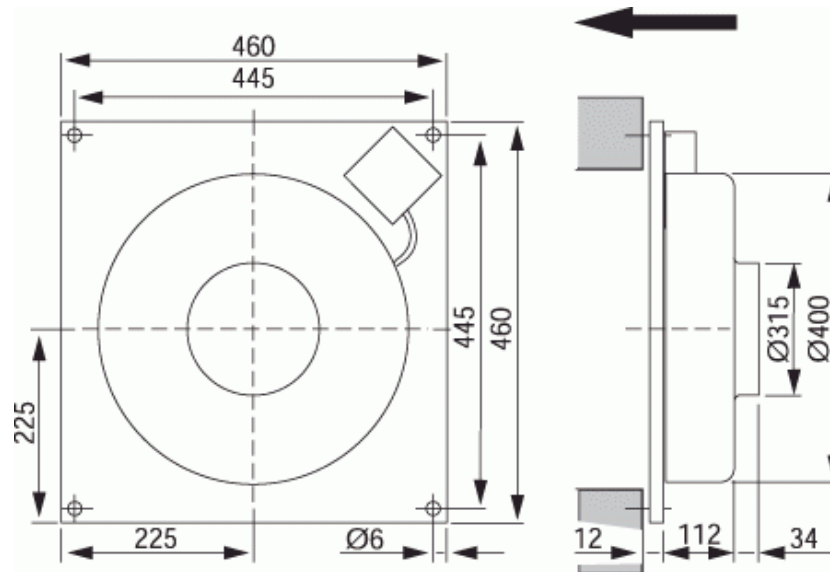
Propagation type: Semi-spherical

Equivalent absorption area: 20

	Tot	63	125	250	500	1k	2k	4k	8k
Inlet Lw dB(A)	76	56	59	65	66	66	72	68	66
Surrounding Lw dB(A)	58	28	34	44	50	51	53	49	43
Surrounding Lp dB(A)	51	21	27	37	43	45	47	43	36

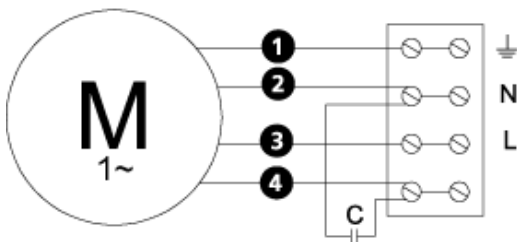


Dimensions



Wiring diagram

4040001



- (M) = Fan Motor
- (M1) = Fan Motor
- (M2) = Fan Motor
- (M3) = Rotor Motor
- 1 = Yellow/Green
- 2 = Black
- 3 = Blue
- 4 = Brown
- 5 = White (TW)
- 6 = Orange
- 7 = Grey
- 8 = Red
- 9 = Green
- 10 = Violet

Accessories

Electric accessories



VRDE 1,5



VRS 2,0



VRTE 1

Accessories



BSV 315



MK 315



VK 45



YG 315



LDC 315