

KVFU 200 A

Description

KV is a range of wall mounted fans. The fans are available in six sizes giving twelve different capacities. This variety combined with ease of positioning allow for a wide variety of applications including use in damp and humid environments. The fans housing and square backing plate are made of galvanised steel. They are entirely maintenance free.

The range is fitted with ball bearing mounted external rotor type motors with radial backward curved impellers.

The fans speed can be controlled by voltage variation.



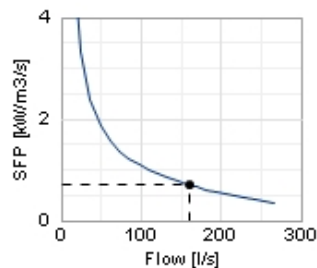
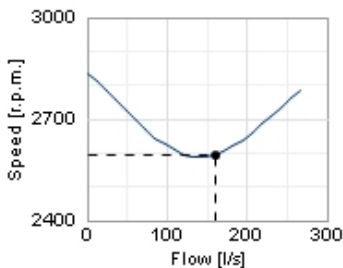
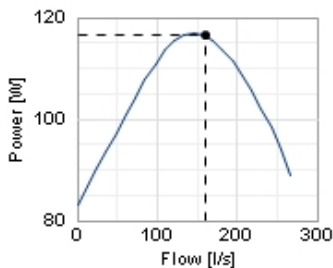
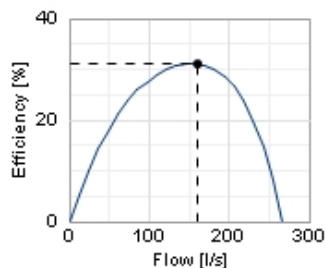
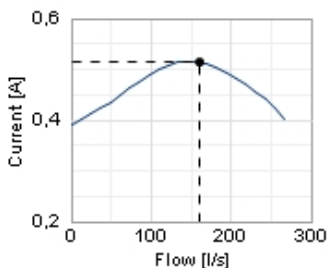
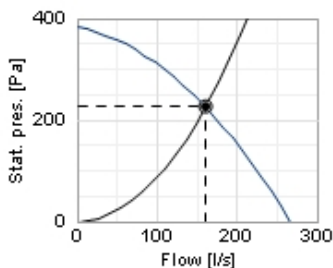
Technical data

| Parameter | value | Unit |
|---|---------|--------|
| Voltage | 230 | V |
| Phase | 1 | ~ |
| Frequency | 50 | Hz |
| Power | 115 | W |
| Current | 0,5 | A |
| R.p.m. | 2580 | r.p.m. |
| Max. temperature of transported air | 60 | °C |
| Max. temperature of transported air when speed-controlled | 60 | °C |
| Sound pressure level at 3 m | 47 | dB(A) |
| Length | 127 | mm |
| Width | 400 | mm |
| Height | 400 | mm |
| Weight | 3,7 | kg |
| Enclosure class, motor | 44 | IP |
| Insulation class, motor | F | |
| Capacitor | 4 | µF |
| Duct connection | ø200 mm | |

Diagrams

○ Selected point

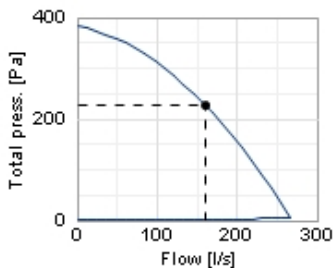
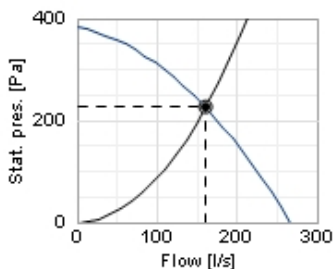
| | |
|----------------------------|-------|
| Flow [l/s] | 160 |
| Stat. pres. [Pa] | 226 |
| ● Work point | |
| Flow [l/s] | 160 |
| Stat. pres. [Pa] | 226 |
| Power [W] | 117 |
| Current [A] | 0,514 |
| Speed [r.p.m.] | 2596 |
| Efficiency [%] | 31 |
| SFP [kW/m ³ /s] | 0,715 |
| Voltage [V] | 230 |



Sound

○ Selected point

| | |
|----------------------------|-------|
| Flow [l/s] | 160 |
| Stat. pres. [Pa] | 226 |
| ● Work point | |
| Flow [l/s] | 160 |
| Stat. pres. [Pa] | 226 |
| Total press. [Pa] | 228 |
| Power [W] | 117 |
| Current [A] | 0,514 |
| Speed [r.p.m.] | 2596 |
| Efficiency [%] | 31 |
| SFP [kW/m ³ /s] | 0,715 |
| Voltage [V] | 230 |

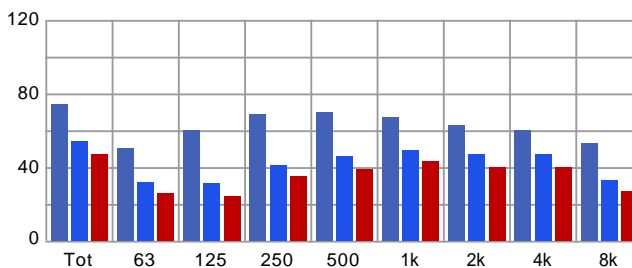


Distance: 3

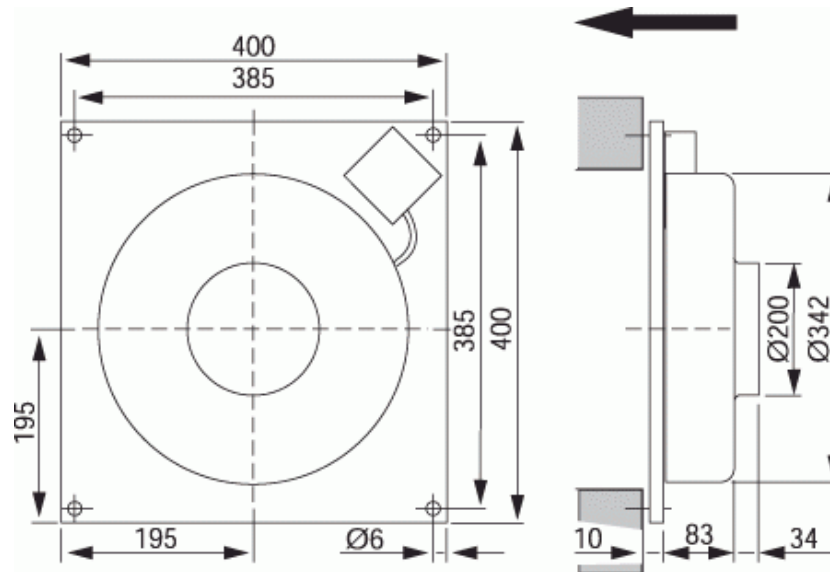
Propagation type: Semi-spherical

Equivalent absorption area: 20

| | Tot | 63 | 125 | 250 | 500 | 1k | 2k | 4k | 8k |
|----------------------|-----|----|-----|-----|-----|----|----|----|----|
| Inlet Lw dB(A) | 74 | 50 | 60 | 69 | 70 | 67 | 63 | 60 | 53 |
| Surrounding Lw dB(A) | 54 | 32 | 31 | 41 | 46 | 49 | 47 | 47 | 33 |
| Surrounding Lp dB(A) | 47 | 26 | 24 | 35 | 39 | 43 | 40 | 40 | 27 |

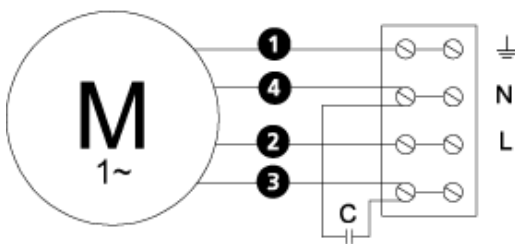


Dimensions



Wiring diagram

4040002



- Ⓜ = Fan Motor
- Ⓜ1 = Fan Motor
- Ⓜ2 = Fan Motor
- Ⓜ3 = Rotor Motor
- ① = Yellow/Green
- ② = Black
- ③ = Blue
- ④ = Brown
- ⑤ = White (TW)
- ⑥ = Orange
- ⑦ = Grey
- ⑧ = Red
- ⑨ = Green
- ⑩ = Violet

Accessories

Electric accessories



VRDE 1,5



VRS 1,0



VRTEC

Accessories



BSV 200



MK 200



VK 40



YG 200



LDC 200