

KVFU 125 C

Description

KV is a range of wall mounted fans. The fans are available in six sizes giving twelve different capacities. This variety combined with ease of positioning allow for a wide variety of applications including use in damp and humid environments. The fans housing and square backing plate are made of galvanised steel. They are entirely maintenance free.

The range is fitted with ball bearing mounted external rotor type motors with radial backward curved impellers.

The fans speed can be controlled by voltage variation.



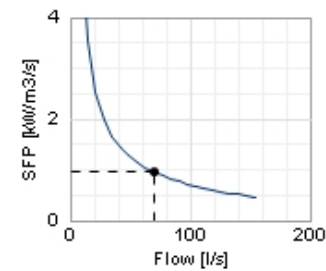
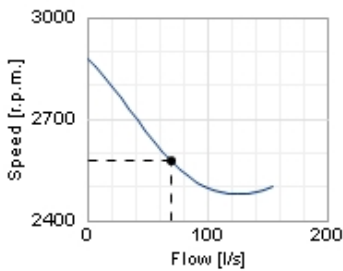
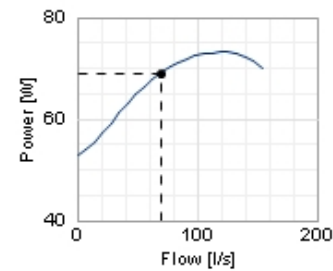
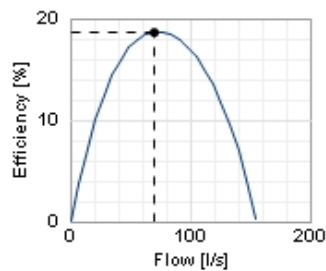
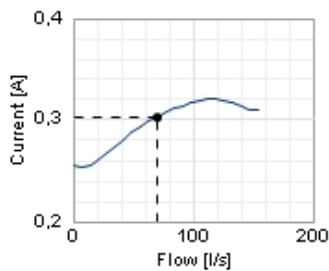
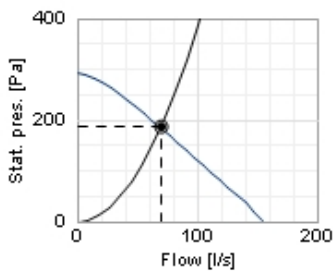
Technical data

Parameter	value	Unit
Voltage	230	V
Phase	1	~
Frequency	50	Hz
Power	62	W
Current	0,27	A
R.p.m.	2480	r.p.m.
Max. temperature of transported air	70	°C
Max. temperature of transported air when speed-controlled	70	°C
Sound pressure level at 3 m	43	dB(A)
Length	111	mm
Width	310	mm
Height	310	mm
Weight	2,3	kg
Enclosure class, motor	44	IP
Insulation class, motor	F	
Capacitor	2	µF
Duct connection	ø125 mm	

Diagrams

○ Selected point

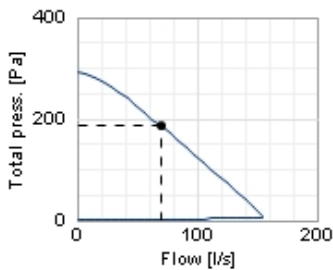
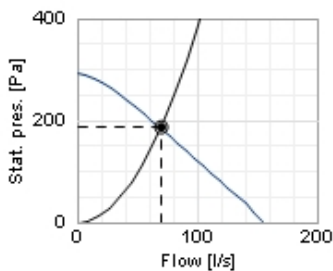
Flow [l/s]	69,3
Stat. pres. [Pa]	186
● Work point	
Flow [l/s]	69,4
Stat. pres. [Pa]	186
Power [W]	69
Current [A]	0,303
Speed [r.p.m.]	2579
Efficiency [%]	18,7
SFP [kW/m ³ /s]	0,974
Voltage [V]	230



Sound

○ Selected point

Flow [l/s]	69,3
Stat. pres. [Pa]	186
● Work point	
Flow [l/s]	69,4
Stat. pres. [Pa]	186
Total press. [Pa]	187
Power [W]	69
Current [A]	0,303
Speed [r.p.m.]	2579
Efficiency [%]	18,7
SFP [kW/m ³ /s]	0,974
Voltage [V]	230

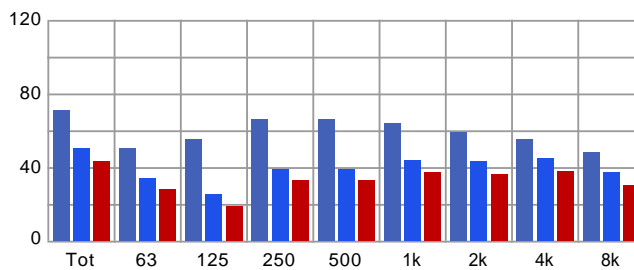


Distance: 3

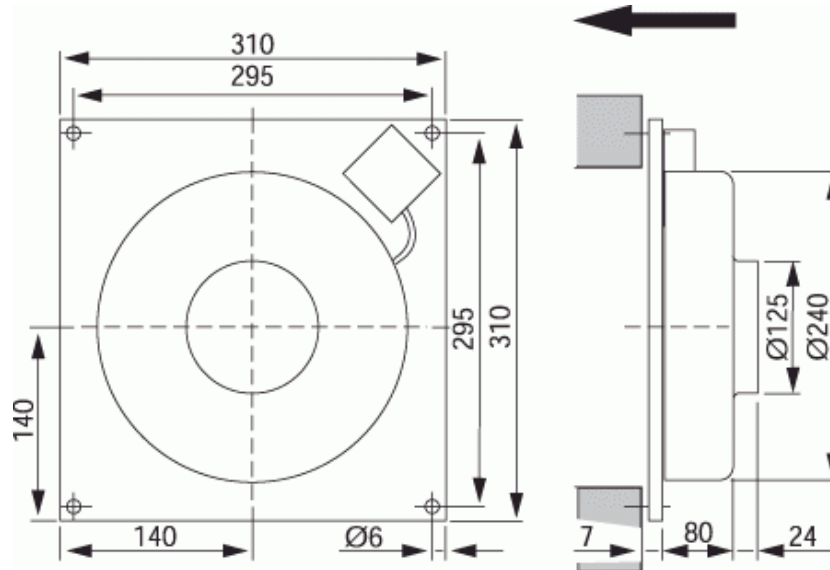
Propagation type: Semi-spherical

Equivalent absorption area: 20

	Tot	63	125	250	500	1k	2k	4k	8k
Inlet Lw dB(A)	71	50	55	66	66	64	59	55	48
Surrounding Lw dB(A)	50	34	25	39	39	44	43	45	37
Surrounding Lp dB(A)	43	28	19	33	33	37	36	38	30

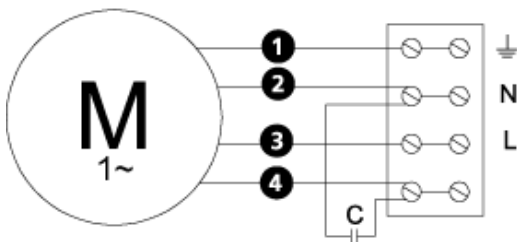


Dimensions



Wiring diagram

4040001



- Ⓜ = Fan Motor
- Ⓜ1 = Fan Motor
- Ⓜ2 = Fan Motor
- Ⓜ3 = Rotor Motor
- ① = Yellow/Green
- ② = Black
- ③ = Blue
- ④ = Brown
- ⑤ = White (TW)
- ⑥ = Orange
- ⑦ = Grey
- ⑧ = Red
- ⑨ = Green
- ⑩ = Violet

Accessories

Electric accessories



VRDE 1,5



VRS 0,5



VRTEC

Accessories



BSV 125



MK 125



VK 30



YG 125



LDC 125